






Standard Process
VETERINARY FORMULAS™

standardprocess.com

We focus on achieving holistic health through nutrition. From our organic, regenerative farming practices to our Nutrition Innovation Center, we are committed to clinical science that advances health and changes lives.

     ©2023 Standard Process Inc. All rights reserved. L1052 03/23

SUPPLEMENTS FOR WHOLE PET WELLNESS

From Our Farm
to Your Practice

Standard Process
VETERINARY FORMULAS™





"In this day and age, when everyone is seeking more healthy choices and support for themselves and their beloved family pets, I can recommend Standard Process products with confidence. The quality and amazing results I get in supporting organ function make this an easy step towards helping patients live healthier lives."

Dr. Sheila Dodson, DVM, CVA

Veterinarian/Owner
Mariposa Veterinary Wellness Center



CHANGING LIVES OF PETS AND THEIR OWNERS

Since 1929, Standard Process has been the visionary leader in whole food nutrient solutions. A holistic approach to nutrition empowers practitioners to change lives. We work with health care professionals to ensure patients receive the optimal health benefits of our supplements.



THE STANDARD PROCESS DIFFERENCE

VETERINARY FORMULAS

Dogs, cats, and horses have individual nutritional needs beyond what their regular diets provide. These unique needs change based on age, activity level, and health status. Standard Process Veterinary Formulas™ were created to fill these potential nutritional gaps. The goal of whole food supplementation is to provide nutrients for the body that are as close as possible to how they are found in nature. After all, it is in this whole food state that nutrition is typically harnessed and presented to the body.

Offered through qualified veterinary professionals, Standard Process Veterinary Formulas™ are specifically designed for dogs, cats and horses. The same state-of-the-art manufacturing processes and high-quality ingredients used to produce our human supplements are used for our Veterinary Formulas.

We believe that what's good for us is also good for our pets.



BUCKWHEAT



BEET ROOT



BRUSSEL SPROUTS



BEEF KIDNEY



PEA VINE



NUTRITIONAL YEAST



OATS



BEEF LIVER



HEMP

ACHIEVING HOLISTIC HEALTH THROUGH **NUTRITION**

The key to pets' optimal health is a diet rich in a variety of complex nutrients. The ingredient combinations in Standard Process Veterinary Formulas™ provide a spectrum of nutrients to support multiple organs and systems in the body.

Complex formulas of targeted nutrients are derived from whole food ingredients, whole food concentrates and isolates, organ and glandular tissue, specialized protein extracts, botanicals, and synthetic ingredients.



THE GREAT MAJORITY
of raw plant ingredients used in
our supplements are grown on
OUR ORGANIC FARM

ORGAN AND GLANDULAR TISSUE AND SPECIALIZED PROTEIN EXTRACTS

Organ and glandular tissues, as well as specialized protein extracts, are inherently different from skeletal muscle. Organ meats have more DNA per gram than skeletal muscle, different protein profiles, and different starting concentrations of vitamins and minerals.

Current laboratory methods have confirmed that specialized protein extracts contain minerals, nucleotides (the components of nucleic acids like RNA and DNA) and peptides (short chains of amino acids).

All raw animal tissues are obtained exclusively from U.S. Department of Agriculture (USDA)-inspected facilities.

PLANT INGREDIENTS

Botanicals provide important constituents that contribute additional support to the body's systems by complementing the vitamins, minerals, and tissue concentrates found in our whole food-based ingredients.

We grow ingredients such as alfalfa, barley grass, beets, Brussels sprouts, buckwheat, kale, kidney beans, oats, pea vine, and Spanish black radish on our certified organic farm.

PRODUCT COMPONENTS

BOTANICALS + VEGETABLES

- Plant ingredients grown on the Standard Process certified organic farm
- Whole food ingredients
- Botanicals
- Whole food extracts

CONCENTRATES + EXTRACTS

- Protomorphogen™ brand extracts
- Cytosol™ brand extracts
- Whole desiccates

ISOLATES

- Whole food isolates
- Synthetic ingredients

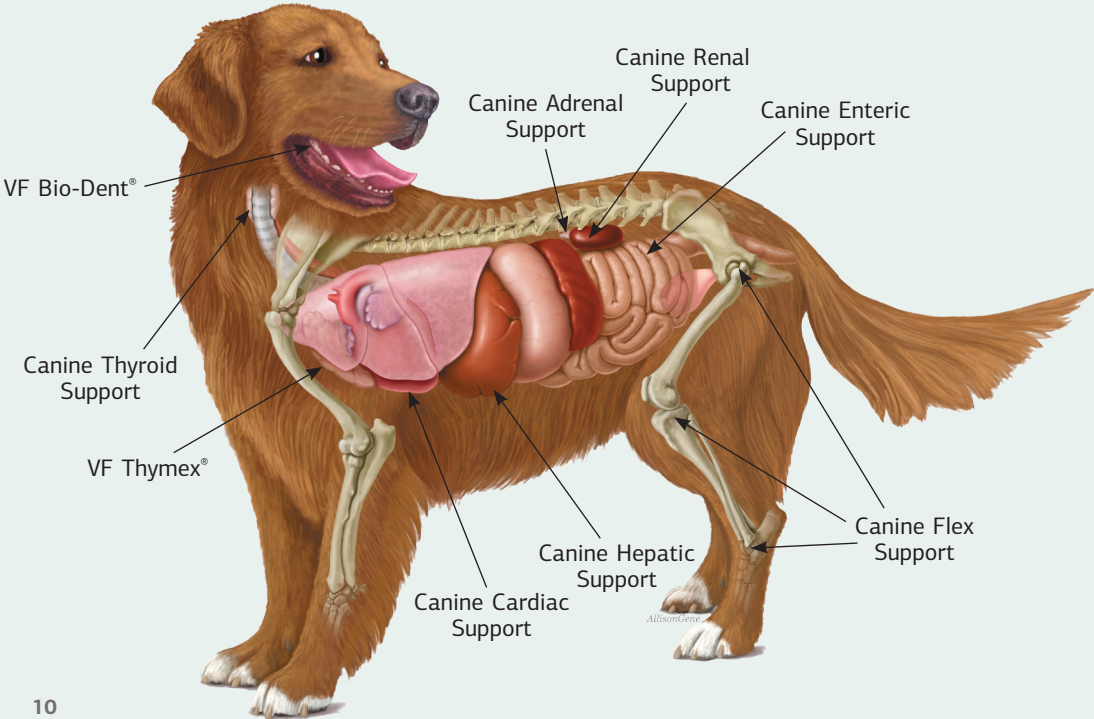


CANINE FORMULAS OVERVIEW

Our canine formulas provide optimal nutritional support for the canine patient.

Multi-System Formulas

- ▶ Canine Dermal Support
- ▶ Canine Hemp Oil Complex™
- ▶ Canine Immune System Support
- ▶ Canine Musculoskeletal Support
- ▶ Canine Whole Body Support
- ▶ VF Antronex®

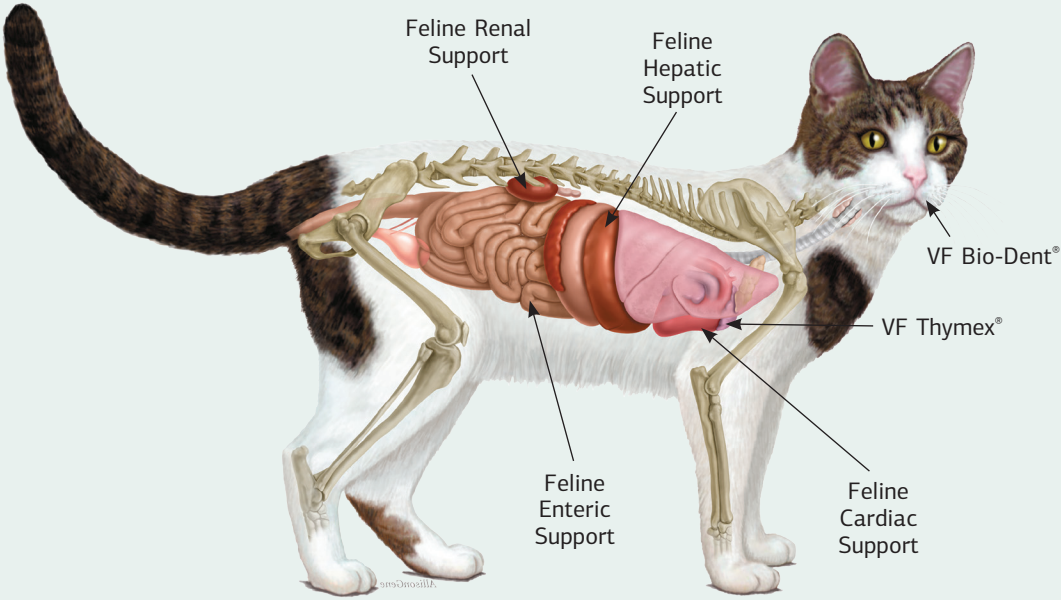


FELINE FORMULAS OVERVIEW

Our feline formulas meet the specific nutritional needs of the feline patient.

Multi-System Formulas

- ▶ Feline Immune System Support
- ▶ Feline Whole Body Support
- ▶ VF Antronex®



COMMITMENT TO **QUALITY**



ORGANIC FARM

We are proud to be one of the few supplement manufacturers that can assure quality ingredients by growing many of our raw materials locally and organically. If we can't grow it, we actively source the best-quality nutritional ingredients.



ENVIRONMENTALLY SAFE MANUFACTURING

Preserving the whole food complex is a top priority when manufacturing our supplements. We are committed to environmentally friendly manufacturing practices to help preserve the planet.



INNOVATION

Our first-of-its-kind, our Nutrition Innovation Center is dedicated to researching new solutions in nutritional therapies.



QUALITY ASSURANCE

Our team of scientists includes chemists and microbiologists who test our product materials to ensure the purity and safety of our supplements.



WHOLE FOOD INGREDIENTS

The great majority of raw plant ingredients used in our supplements are grown on our organic farm. They include alfalfa, barley grass, beets, Brussels sprouts, buckwheat, kale, kidney beans, oats, pea vine, and Spanish black radish.



CHANGE LIVES WITH US

For over 90 years, we have been providing quality whole food nutrient solutions. By working with more than 60,000 health care professionals and veterinarians across the country, we empower them to change millions of lives for the better.

With the support of Standard Process, veterinary professionals have the confidence and expertise to:

- ▶ Incorporate a nutritional assessment with every patient at every visit
- ▶ Give individualized supplement recommendations
- ▶ Offer advice on creating a foundation for optimal animal health

Standard Process offers you an array of educational resources and tools to help you learn and grow your practice. From online ordering and on-demand webinars to personalized technical support, being an account holder has many benefits. If you haven't already, open an account today.

Sign up online or call our customer care representatives.

Online: standardprocess.com/veterinarians

Toll-free: 800-558-8740



WE'RE HERE FOR **YOU**

Learn, stay ahead of your peers about the transformative impact that nutrition has, and understand the right supplements for your patients.

You are best suited to develop unique protocols based on the individual needs of your patients. We empower you by providing continuing education courses, technical support, and more.

RESOURCES:

- ▶ Continuing education
- ▶ Webinars
- ▶ Virtual lunch and learns
- ▶ Visits by your local rep

To learn more, visit

standardprocess.com/Veterinary-Formulas

CLINICAL SUPPORT AND CASE CONSULTATIONS:

Complimentary consultations are available by phone or email to help you identify supplement combinations for individual cases. These recommendations help you achieve the best patient outcome.

Phone: 888-982-8130

Email: vethelp@standardprocess.com